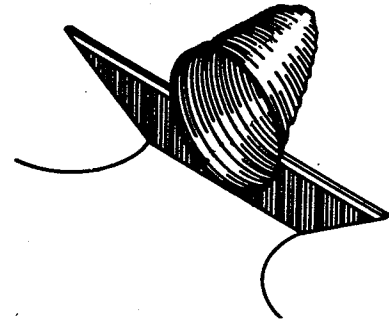
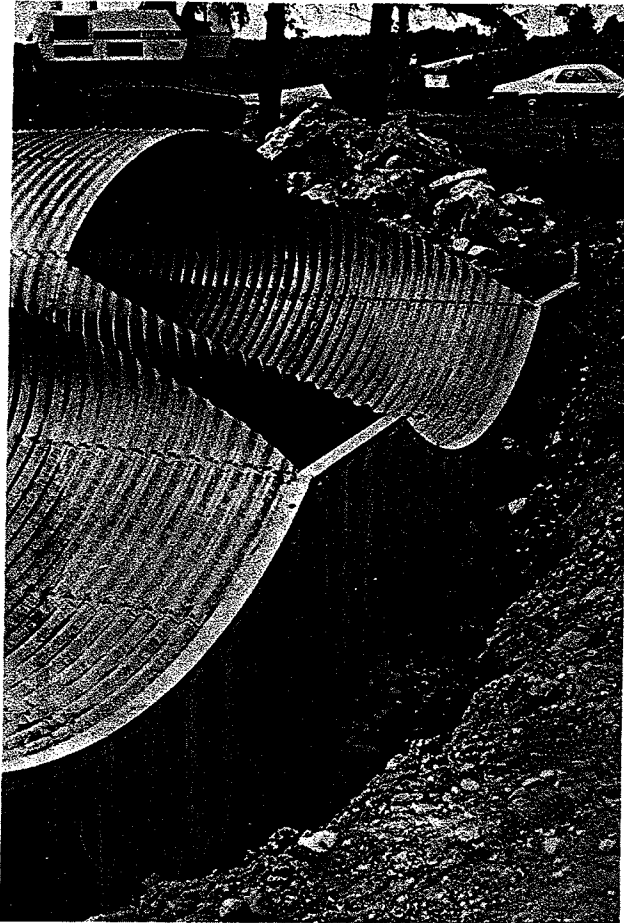
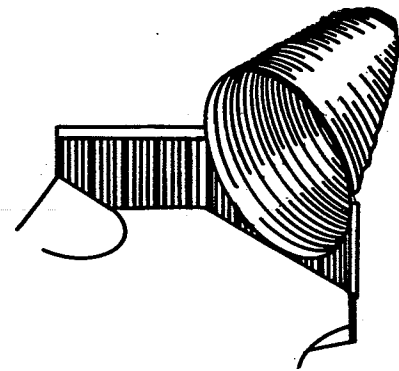


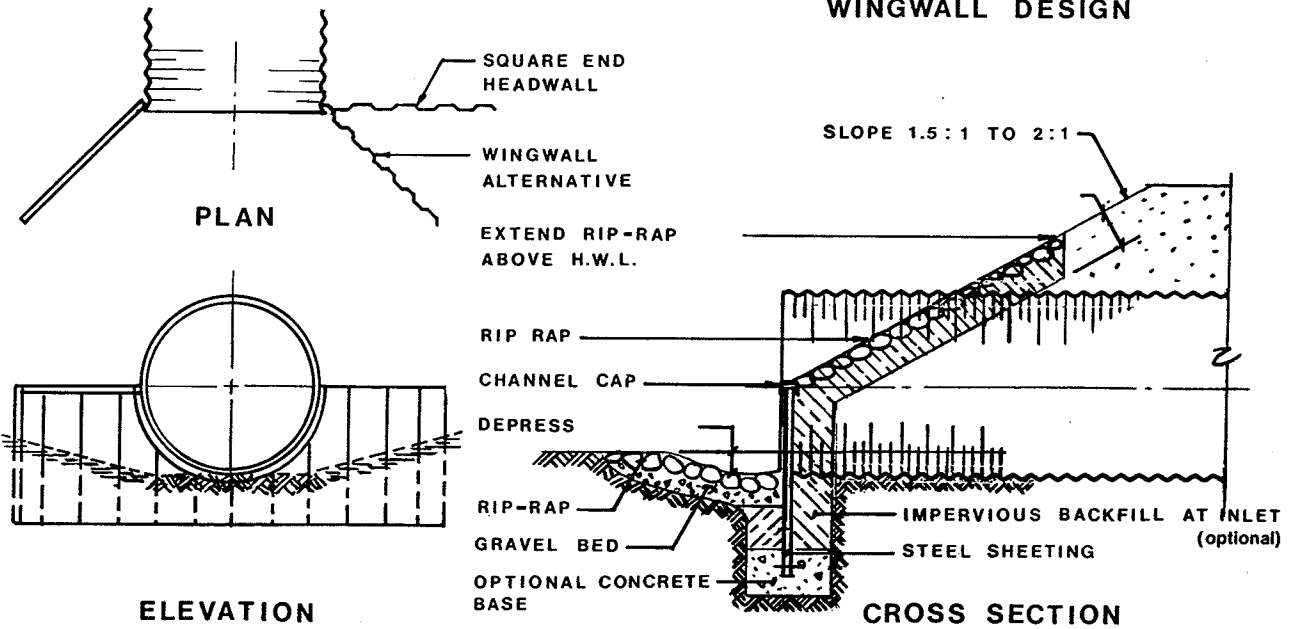
HALF HEIGHT HEADWALLS



SQUARE END DESIGN



WINGWALL DESIGN



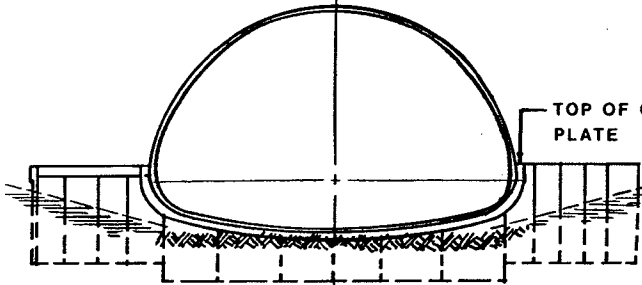
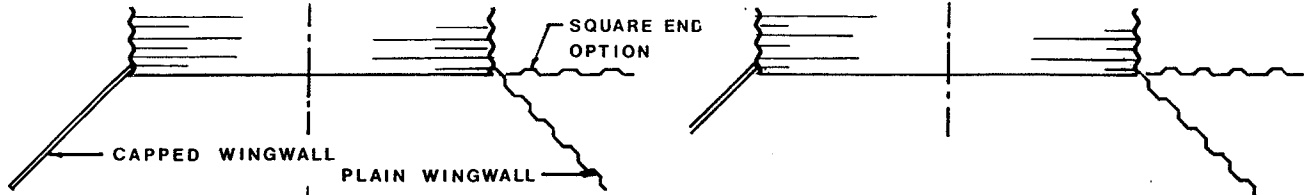
NCSPA Design Data Sheets are prepared by the NCSPA Technical Advisory Committee to provide up-to-date technical information about CSP products and their proper use and application. User comments or questions are welcome.

Issued: 1985

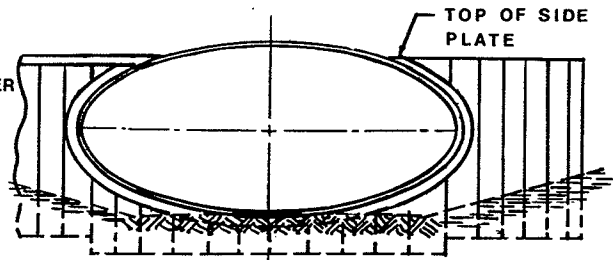


NATIONAL CORRUGATED STEEL PIPE ASSOCIATION

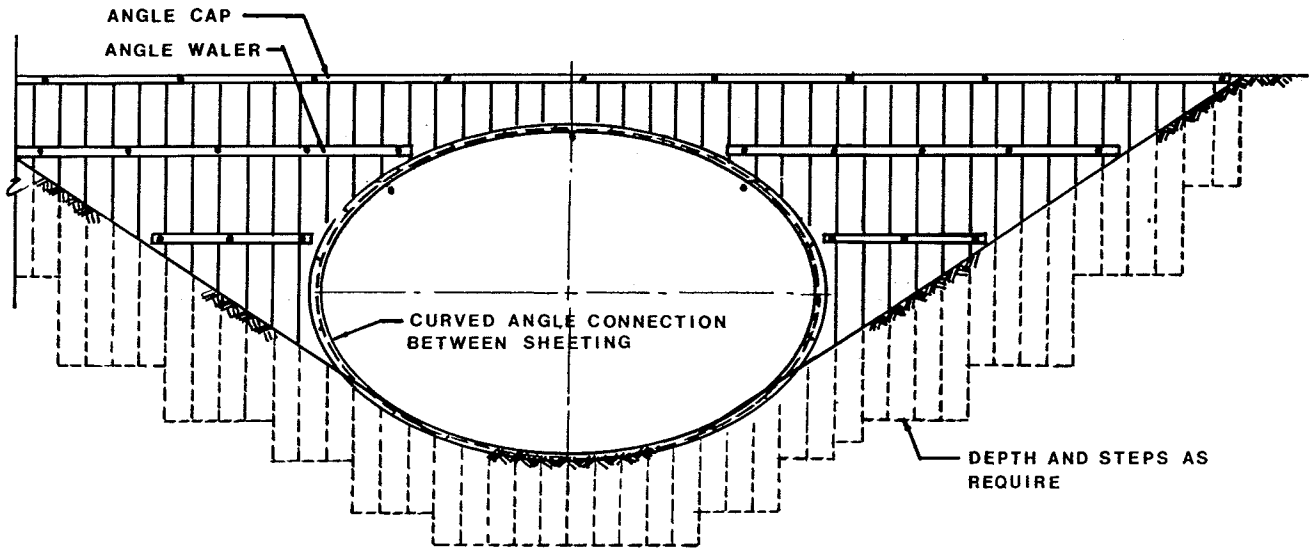
Design Data Sheets are illustration only. Do not use for detailed design purposes



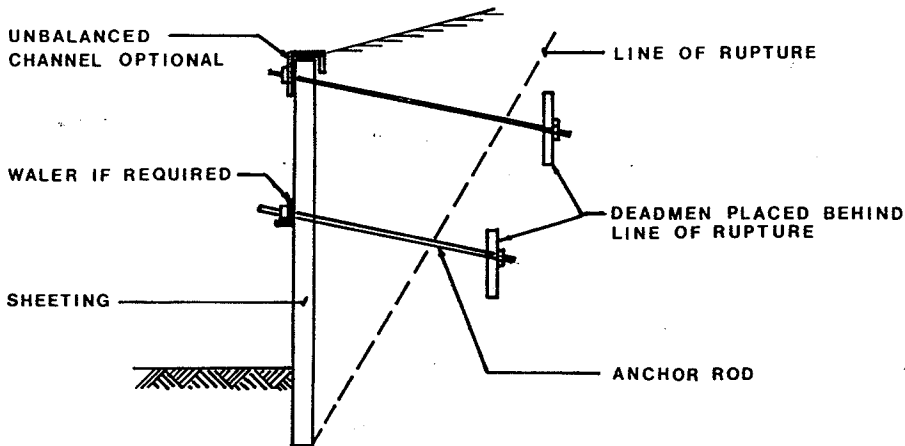
PIPE ARCH HEADWALL



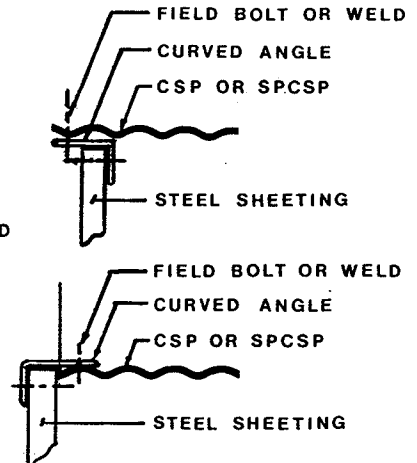
HORIZONTAL ELLIPSE HEADWALL



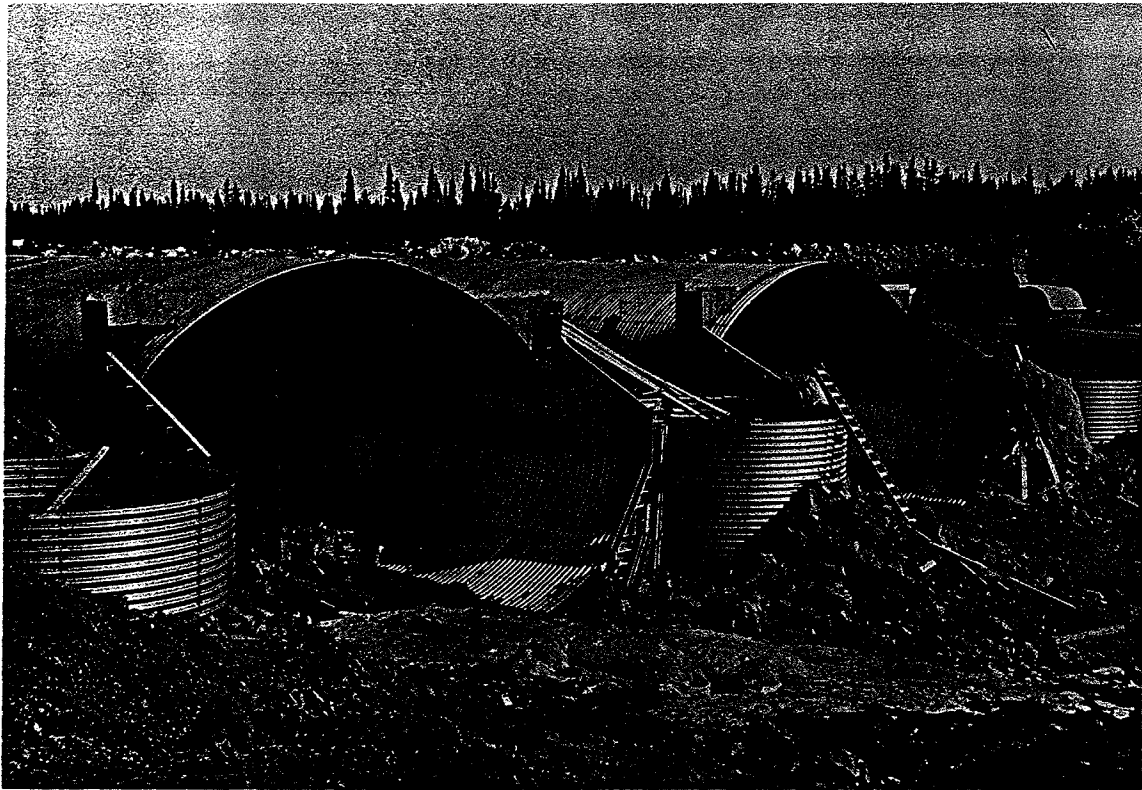
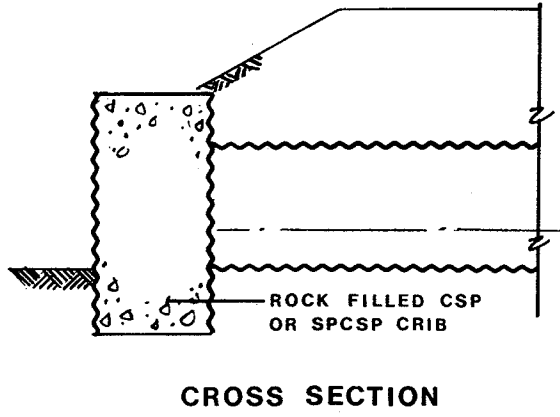
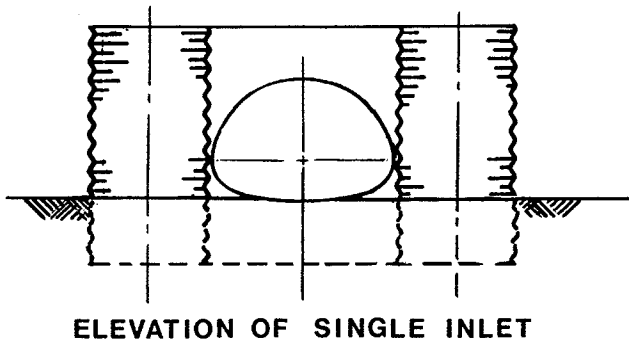
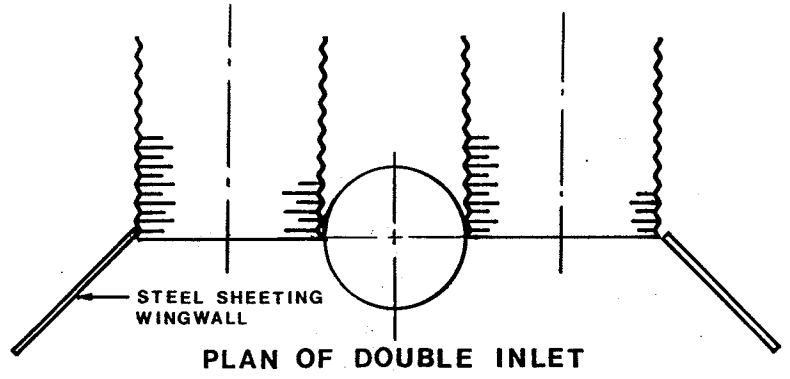
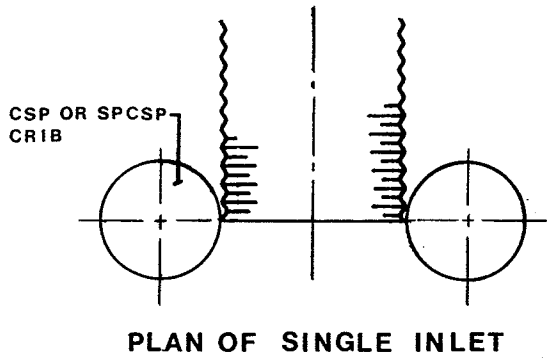
FULL HEIGHT SQUARE END HEADWALL

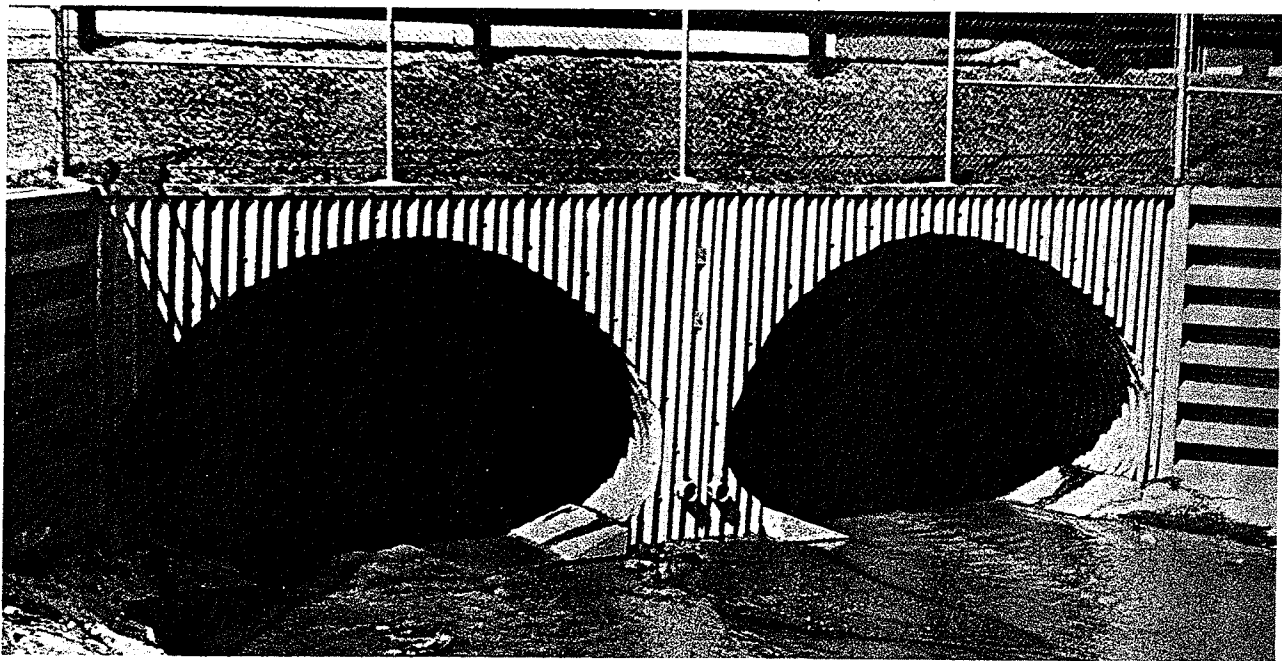
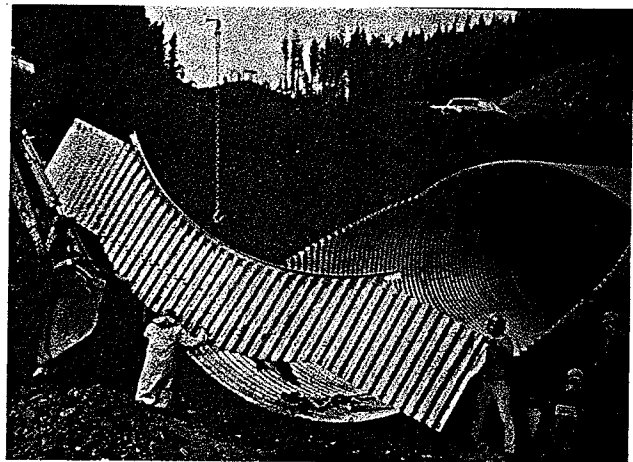
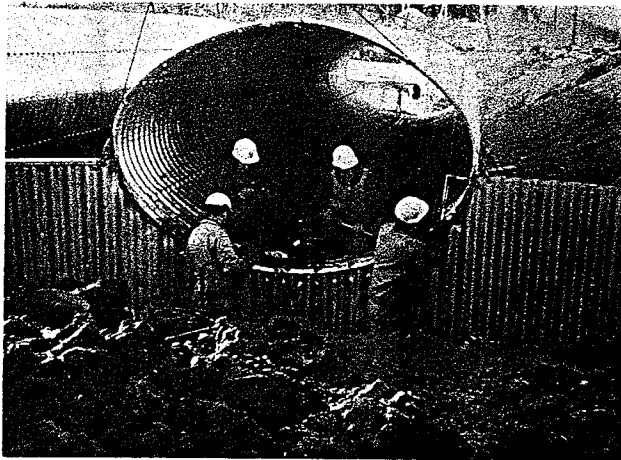
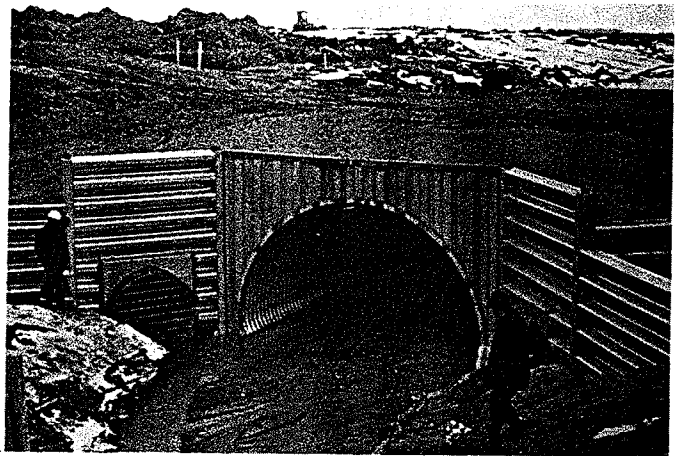
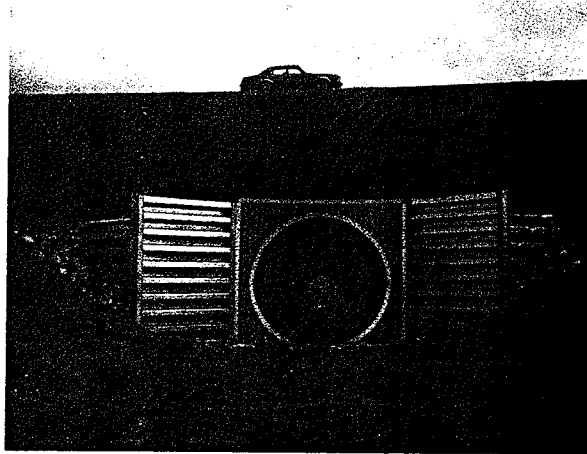


TIEBACK DETAIL



CAP DETAILS





This Data Sheet is for general use only and should not be used without first securing competent engineering advice as to its suitability for any specific application. The publication of this material is not intended as a representation or warranty on the part of the National Corrugated Steel Pipe Association that such data and information are suitable for any general or particular use or of freedom from infringement of any patent(s). Neither the NCSPA nor any of its members warrants or assumes liability as to its suitability for any given application. Anyone using this data sheet assumes all liability arising from such use.

Design Data Sheets are
illustration only.
Do not use for
detailed design purposes

National Corrugated Steel Pipe Association
1133 Fifteenth Street N.W. • Washington D.C. 20005 • (202)429-9440

Issued: 1985